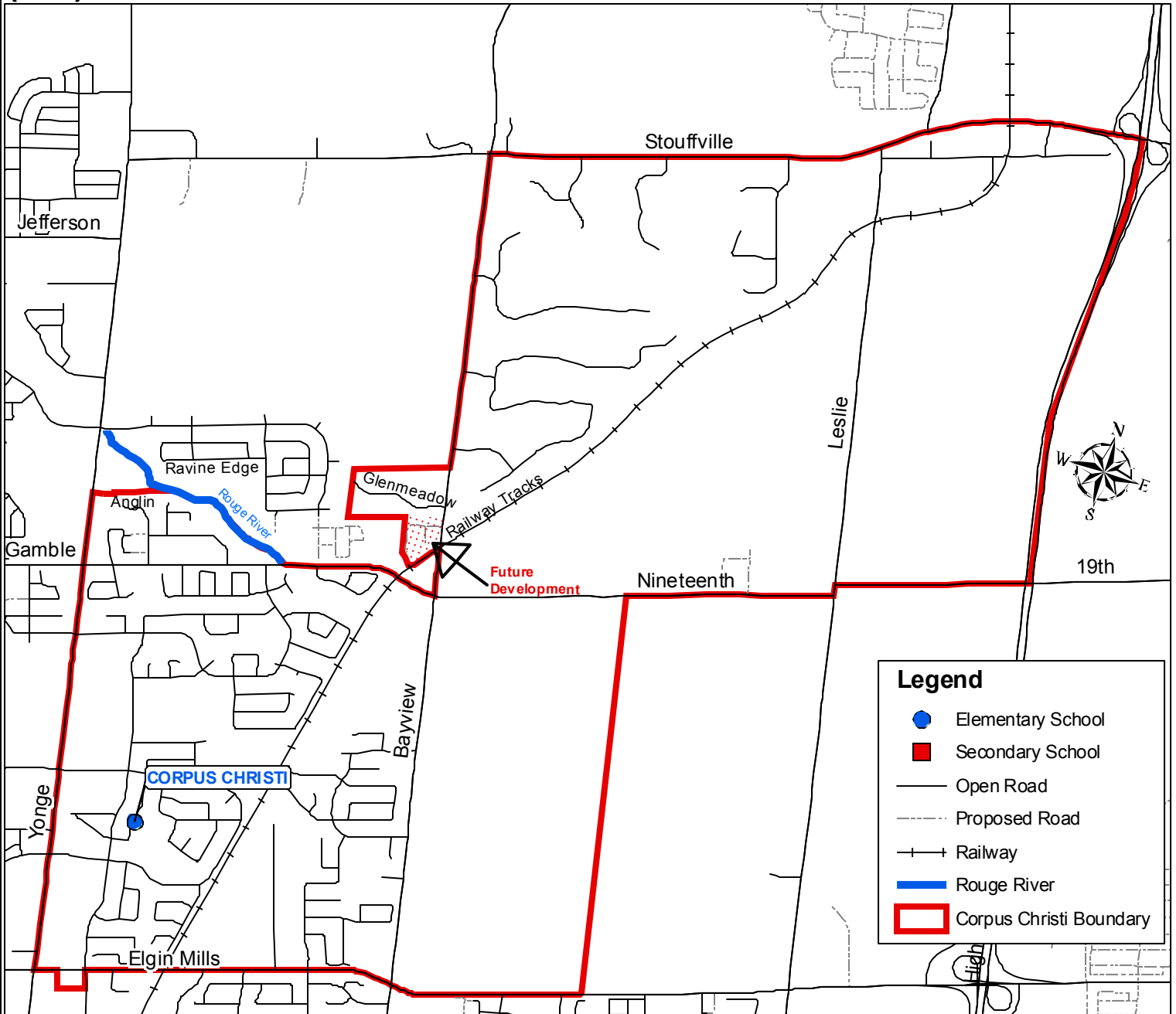


Corpus Christi
35 Squire Drive
(905) 770-8713

Board Approved: September 18, 2007
 Date Effective: September 18, 2007



Legend

- Elementary School
- Secondary School
- Open Road
- - - Proposed Road
- + + Railway
- Rouge River
- Corpus Christi Boundary

CORPUS CHRISTI BOUNDARY

NORTH: The backlots of Anglin Dr. from Yonge St. to the Rouge River; then south of the Rouge River from the backlots to Nineteenth Ave.; then the south side of Nineteenth Ave. from the Rouge River to Bayview Ave.; then both sides of Bayview Ave. from Nineteenth Ave. to Stouffville Sideroad (including Glenmeadow Lane and the future development immediately south of Glenmeadow Lane); then the south side of Stouffville Sideroad from Bayview Ave. to Highway 404.

EAST: West of Highway 404 from Stouffville Sideroad to Nineteenth Ave.; then the north side of Nineteenth Ave. from Highway 404 to the midway point between Leslie St. and Bayview Ave.; then the midway point between Leslie St. and Bayview Ave from Nineteenth Ave. to Elgin Mills Rd.

SOUTH: Both sides of Elgin Mills Rd. from Highway 404 to Yonge St.

WEST: East side of Yonge St. from Elgin Mills Rd. to the backlots of Anglin Dr

OUR LADY HELP OF CHRISTIANS

Attendance areas are subject to change. Please contact Planning Services for confirmation.

PLANNING SERVICES
 September, 2007
 k:\projects\board approved boundaries
 CorpusChristi.pdf