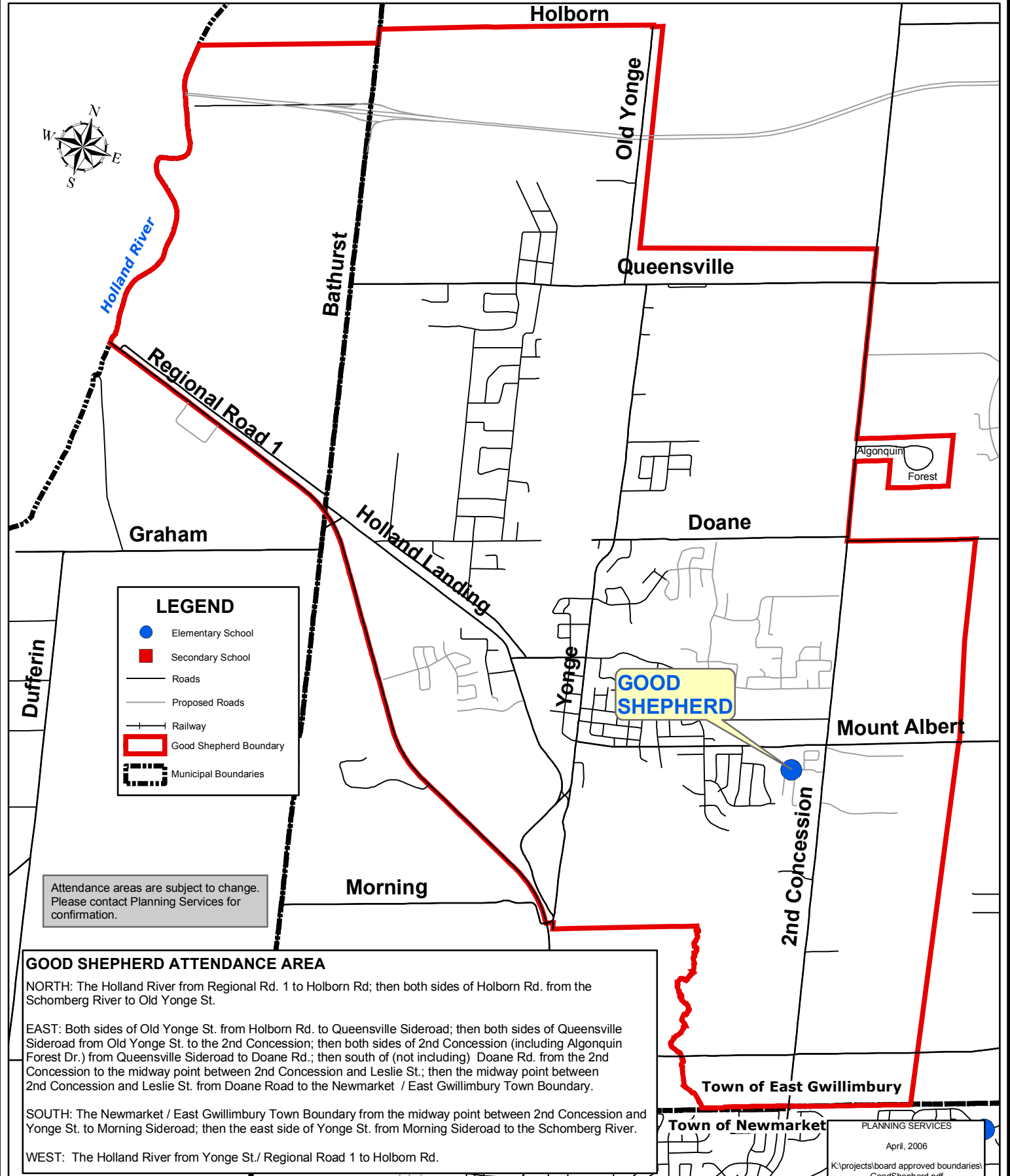


# Good Shepherd

19112 2nd Concession

(905) 895-0303

Date Effective: September, 1993



**LEGEND**

- Elementary School
- Secondary School
- Roads
- - - Proposed Roads
- +— Railway
- Good Shepherd Boundary
- Municipal Boundaries

Attendance areas are subject to change. Please contact Planning Services for confirmation.

**GOOD SHEPHERD ATTENDANCE AREA**

**NORTH:** The Holland River from Regional Rd. 1 to Holborn Rd.; then both sides of Holborn Rd. from the Schomberg River to Old Yonge St.

**EAST:** Both sides of Old Yonge St. from Holborn Rd. to Queensville Sideroad; then both sides of Queensville Sideroad from Old Yonge St. to the 2nd Concession; then both sides of 2nd Concession (including Algonquin Forest Dr.) from Queensville Sideroad to Doane Rd.; then south of (not including) Doane Rd. from the 2nd Concession to the midway point between 2nd Concession and Leslie St.; then the midway point between 2nd Concession and Leslie St. from Doane Road to the Newmarket / East Gwillimbury Town Boundary.

**SOUTH:** The Newmarket / East Gwillimbury Town Boundary from the midway point between 2nd Concession and Yonge St. to Morning Sideroad; then the east side of Yonge St. from Morning Sideroad to the Schomberg River.

**WEST:** The Holland River from Yonge St./ Regional Road 1 to Holborn Rd.