

OUR LADY OF HOPE

80 Red Cardinal Trail
(905) 773-1383

Board Approved: May 9, 2006
Date Effective: September, 2007
Upon Opening of Father Frederick McGinn

OUR LADY OF HOPE PERMANENT AREA

NORTH: South of (not including) Bloomington Rd., from Dufferin St. to Yonge St.

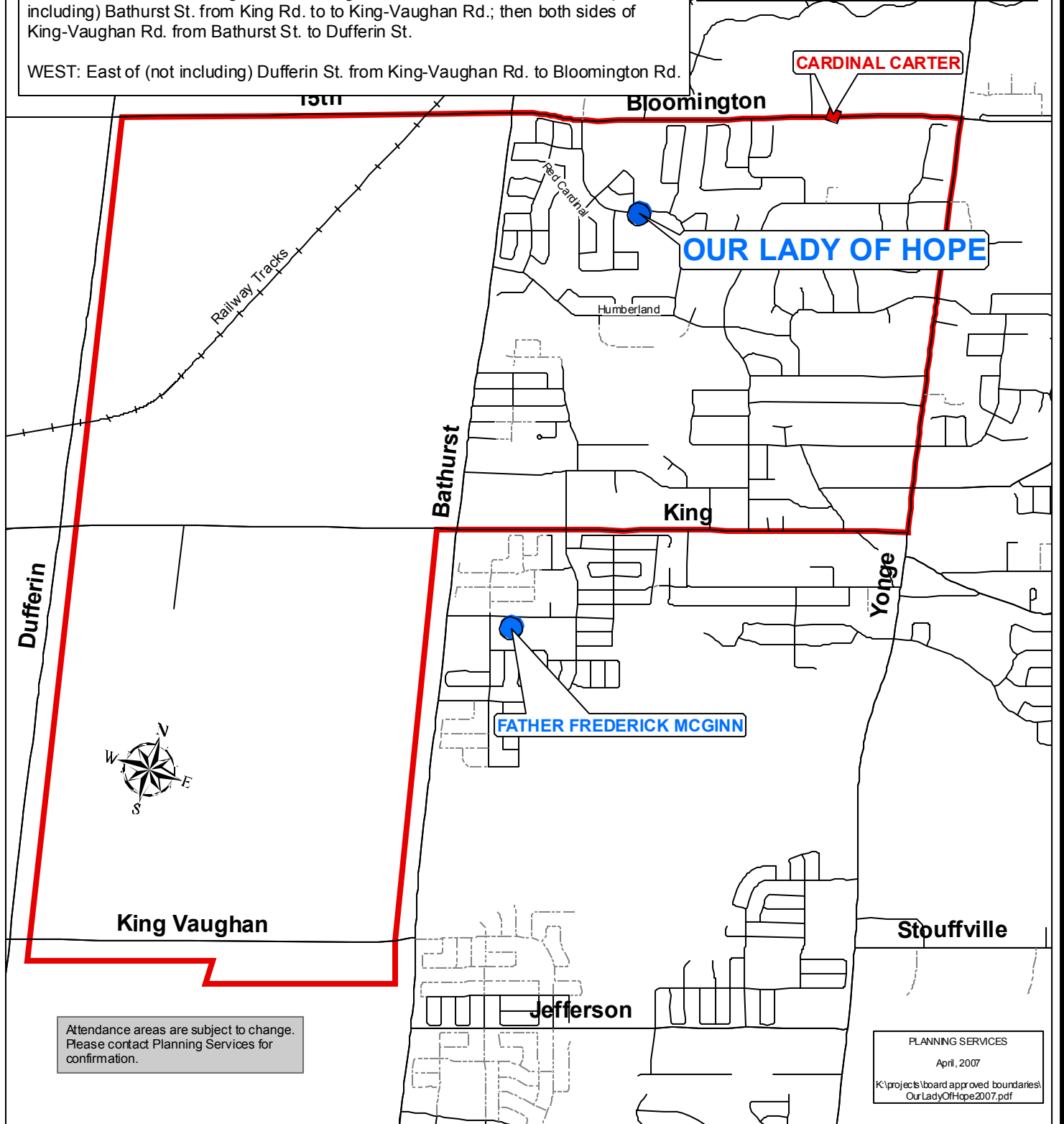
EAST: West side of Yonge St. from Bloomington Rd. to King Rd.

SOUTH: North side of King Rd. from Yonge St. to Bathurst St.; then east of (not including) Bathurst St. from King Rd. to King-Vaughan Rd.; then both sides of King-Vaughan Rd. from Bathurst St. to Dufferin St.

WEST: East of (not including) Dufferin St. from King-Vaughan Rd. to Bloomington Rd.

LEGEND

- Elementary School
- Secondary School
- Our Lady of Hope Boundary
- Roads
- Proposed Roads



Attendance areas are subject to change. Please contact Planning Services for confirmation.

PLANNING SERVICES
April, 2007
K:\projects\board approved boundaries\Our Lady of Hope 2007.pdf