

**Sir Richard W. Scott**  
90 Roxbury Street  
(905) 472-3964

EFFECTIVE: Upon opening of Sir Richard W. Scott

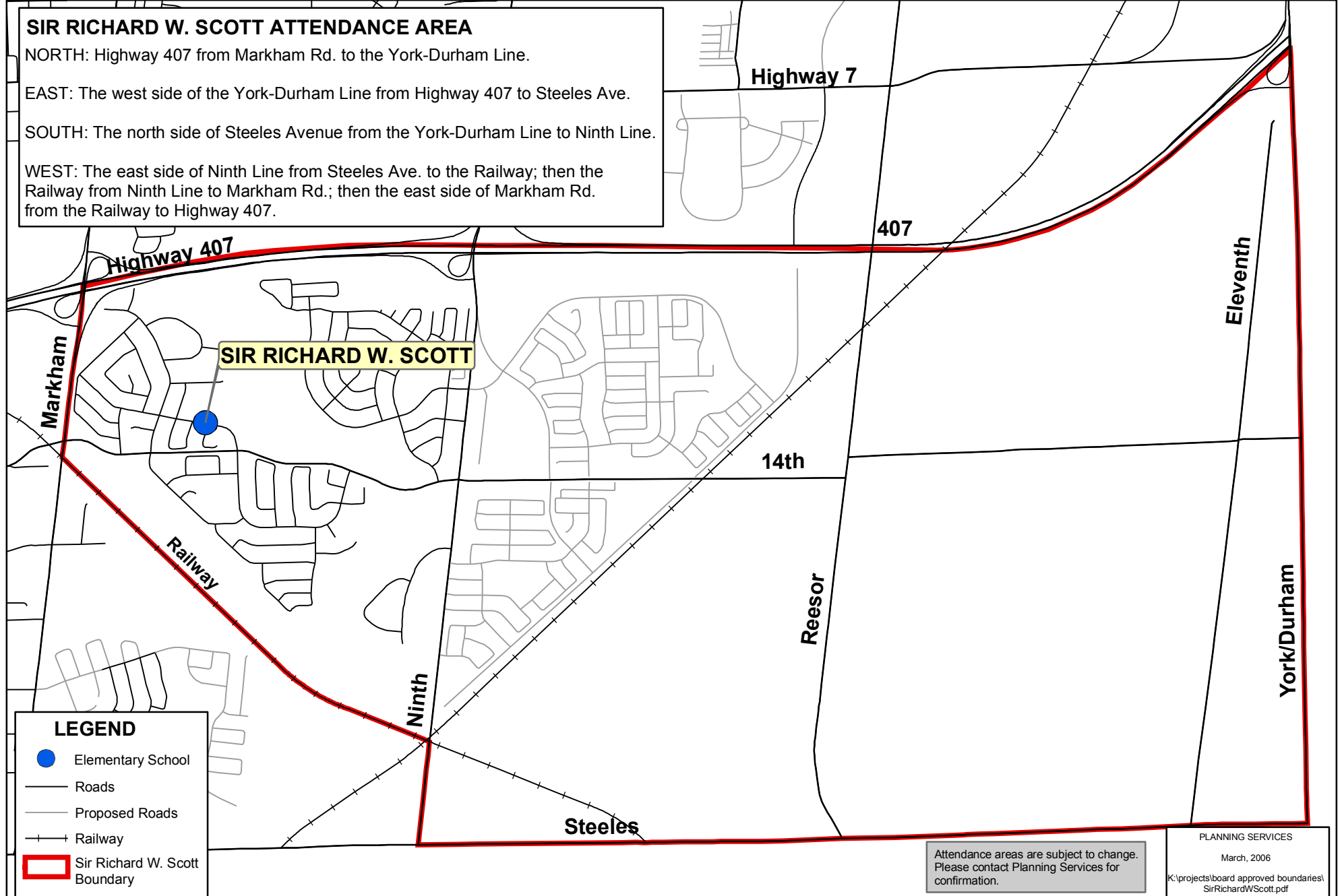
**SIR RICHARD W. SCOTT ATTENDANCE AREA**

NORTH: Highway 407 from Markham Rd. to the York-Durham Line.

EAST: The west side of the York-Durham Line from Highway 407 to Steeles Ave.

SOUTH: The north side of Steeles Avenue from the York-Durham Line to Ninth Line.

WEST: The east side of Ninth Line from Steeles Ave. to the Railway; then the Railway from Ninth Line to Markham Rd.; then the east side of Markham Rd. from the Railway to Highway 407.



**LEGEND**

- Elementary School
- Roads
- Proposed Roads
- +— Railway
- Sir Richard W. Scott Boundary

Attendance areas are subject to change.  
Please contact Planning Services for confirmation.

PLANNING SERVICES  
March, 2006  
K:\projects\board approved boundaries\ SirRichardWScott.pdf