

St. Cecilia

300 Peter Rupert Avenue
Phone: TBD

Board Approved: November 3, 2009
Date Effective: Upon Opening

ST. CECILIA ATTENDANCE AREA

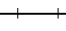
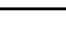


NORTH: The south side of Major Mackenzie Dr. from the Railroad Tracks to Dufferin St.

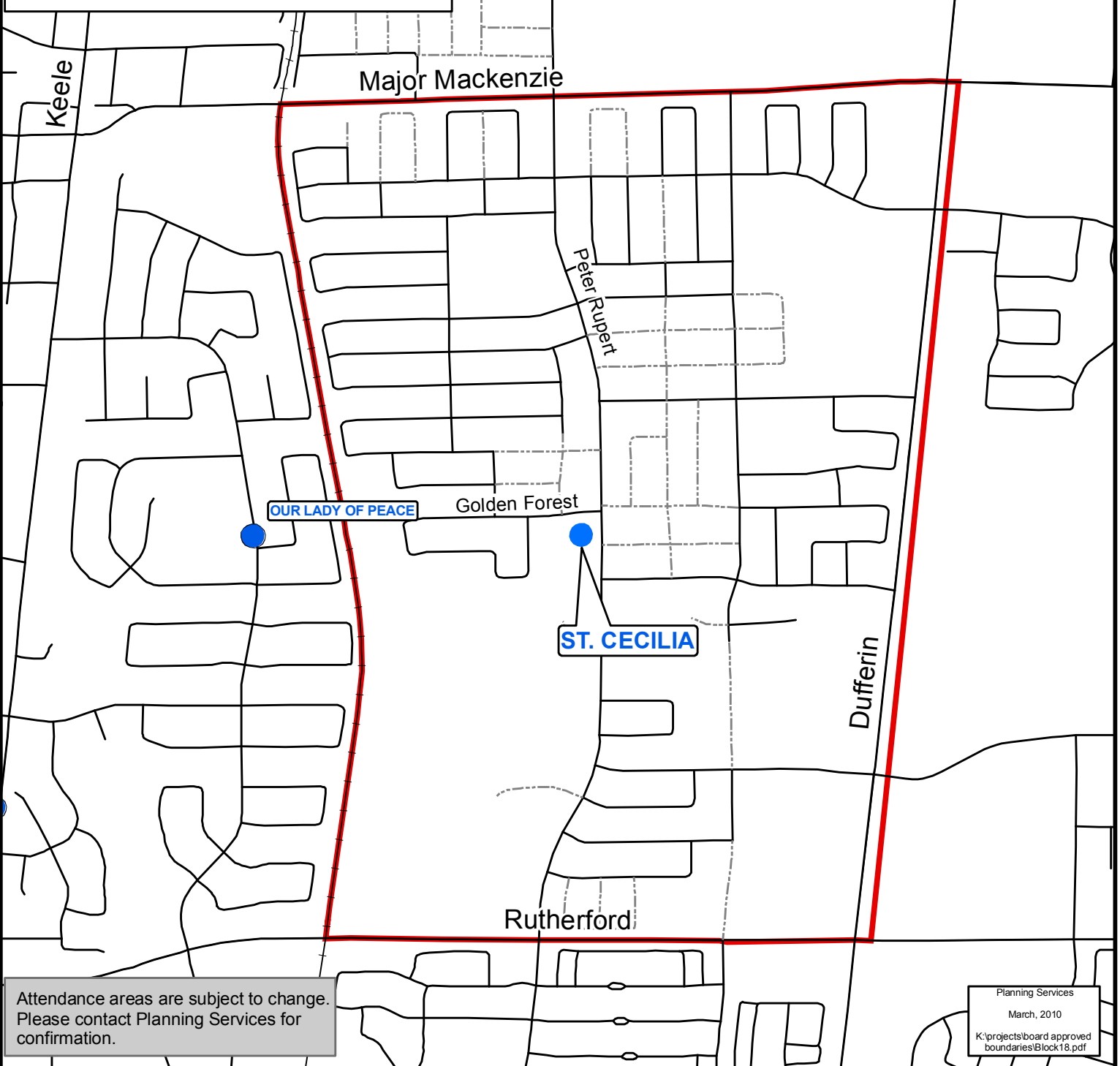
EAST: Both sides of Dufferin St. from Major Mackenzie Dr. to Rutherford Rd.

SOUTH: The north side of Rutherford Rd. from Dufferin St. to the Railroad Tracks.

WEST: The railroad tracks from Rutherford Rd. to Major Mackenzie Dr.

Legend

- Elementary Schools
-  Railway
-  Open Road
-  Proposed Road
-  St. Cecilia Attendance Area



Attendance areas are subject to change. Please contact Planning Services for confirmation.