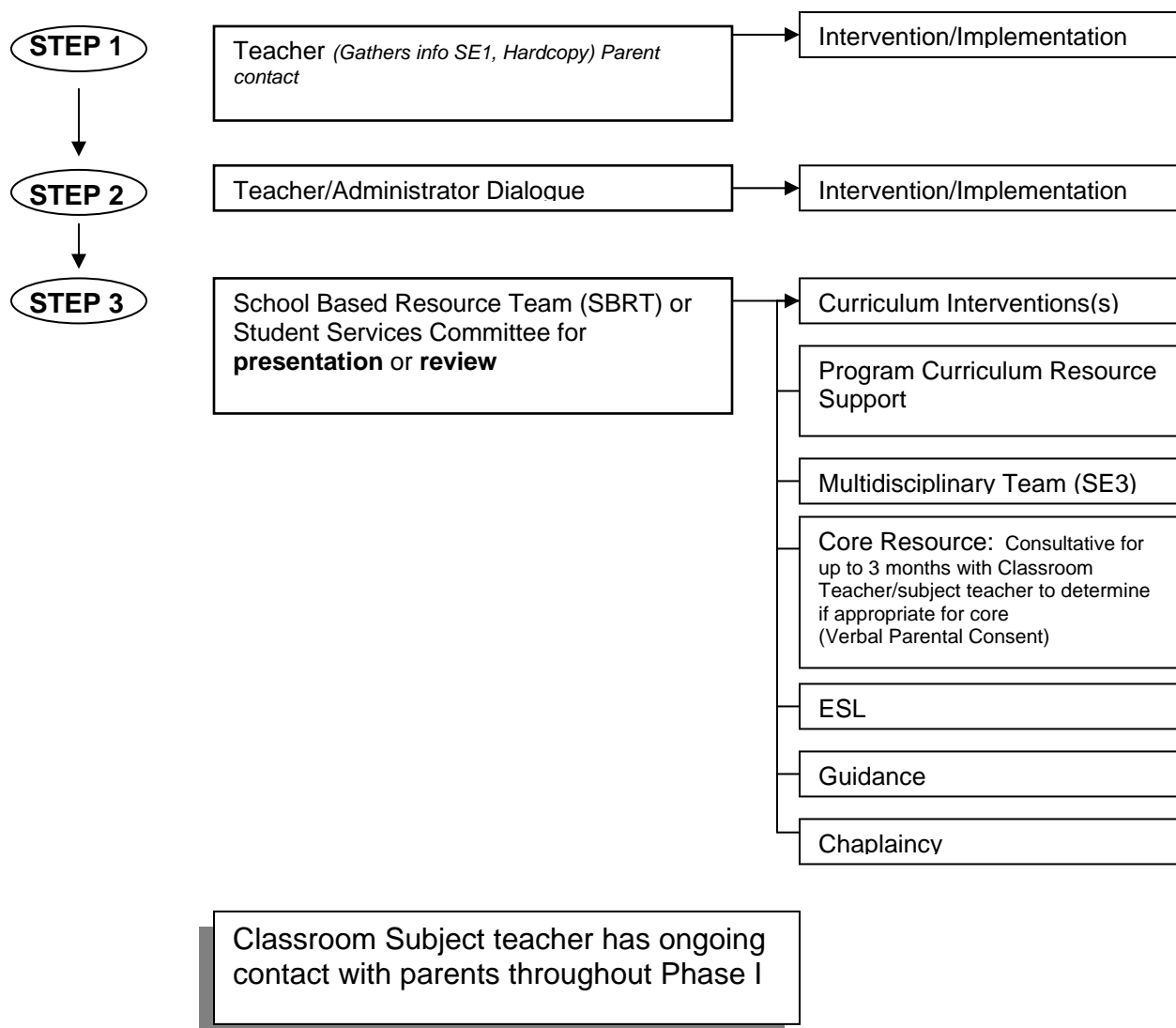


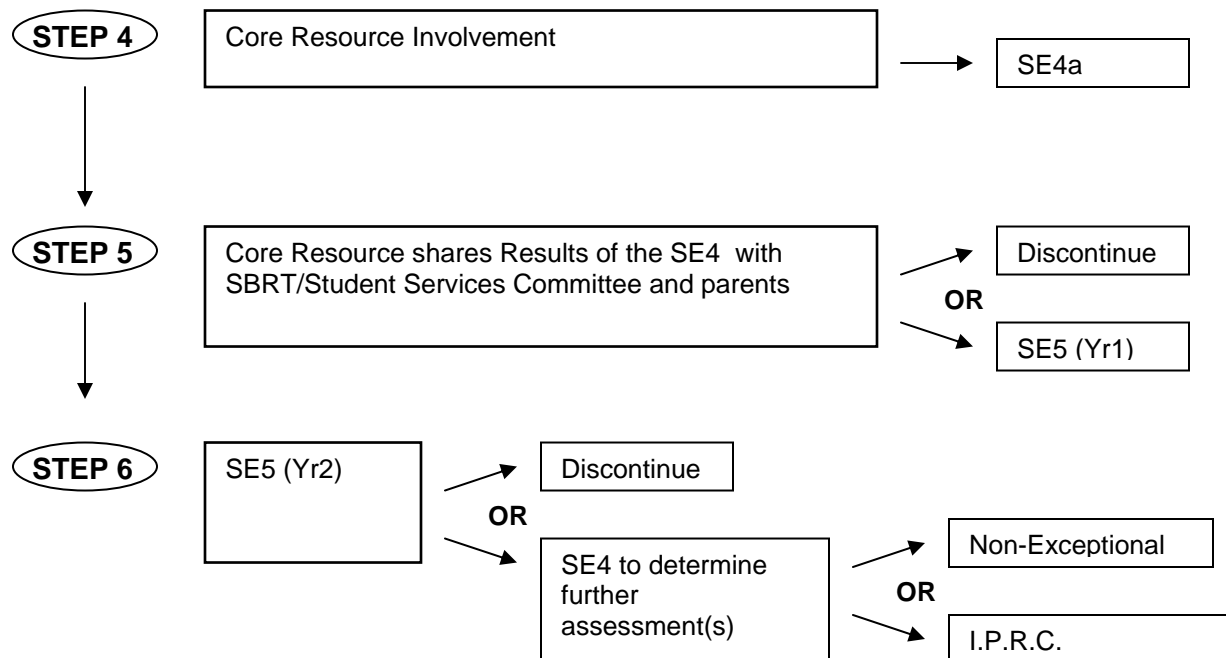
## MEETING STUDENTS' NEEDS

*The professional learning community philosophy encourages and empowers teachers to collaborate, assess and implement best teaching practices to meet the needs of all students working at level one through four of the Ontario Curriculum.*

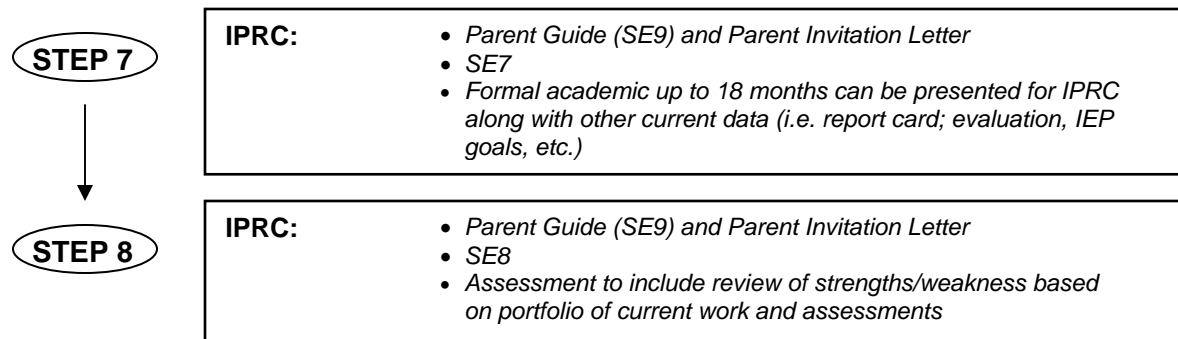
### PHASE 1: Classroom/Subject Teacher



## PHASE 2: Initiation of Special Education



## PHASE 3: Identification (IPRC)



**Formal Assessments** including standardized assessments need to be prepared only for specific purposes:

1. obtaining a baseline
2. determining next steps within 2 years of SE5
3. transitioning from a program e.g. ISAP, LC
4. transitioning into high school

**Important to note** that the entry into Phase 1, 2 or 3 is dependent upon present and previous supports in place