

## Area Profile

- North Woodbridge-Kleinburg-Nashville is generally defined as the area east of Hwy 50, west of Hwy 400 and north of Ruth-erford Road.
- A large portion of ongoing and future development within the City of Vaughan is located in this area, with a new school opening in Kleinburg-Nashville in September, 2016.

## Enrolment Summary (2014-2024)

School Name	Program	Facility Data				2014 Actual Enrolment	Projected October 31st Nominal Enrolment									
		OTG Capacity	Port	Pak	OTG With Pak		2014	2015	2016	2017	2018	2019	2020	2021	2022	2023
Guardian Angels		694	0	0	694	318	386	489	595	678	712	739	777	795	794	787
St. Agnes of Assisi		603	6	10	833	526	492	469	428	443	481	536	589	656	723	766
St. Andrew	ISAP	591	1	0	591	563	521	456	406	357	314	283	259	231	215	202
St. Emily		746	0	12	1022	834	809	760	722	686	645	595	580	561	537	521
St. Stephen		640	1	10	870	792	824	658	628	603	615	629	649	678	686	707
St. Mary of the Angels		672	0	10	902	722	764	806	830	844	853	856	835	811	787	757
St. Michael the Archangel		657	4	0	657	732	775	794	804	808	804	782	758	731	710	683
St. Padre Pio		553	0	8	737	697	671	645	598	554	518	493	452	422	390	373
St. Veronica	TDC	599	0	10	829	814	808	791	758	741	697	673	637	615	579	551
Unnamed Kleinburg (2016)		602	0	0	602	0	0	292	397	479	612	745	837	910	922	936
<b>TOTAL</b>		<b>6,357</b>	<b>12</b>	<b>60</b>	<b>7,737</b>	<b>5,998</b>	<b>6,050</b>	<b>6,160</b>	<b>6,166</b>	<b>6,193</b>	<b>6,251</b>	<b>6,331</b>	<b>6,373</b>	<b>6,410</b>	<b>6,343</b>	<b>6,283</b>
Students Over/Under Capacity						-1,137	-1,085	-1,577	-1,571	-1,544	-1,486	-1,406	-1,364	-1,327	-1,394	-1,454

Programs listed are as of the 2014/2015 school year.  
Projections as of January 28, 2015.

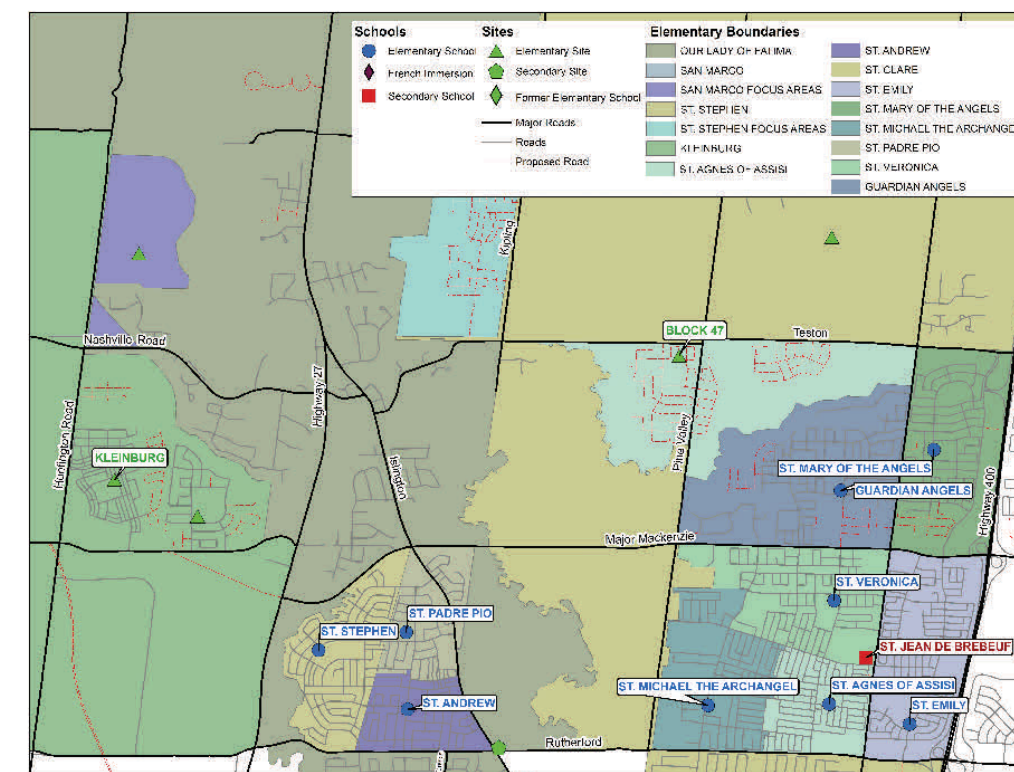
## Projected Utilization (2014-2024)

School Name	2014	2015	2016	2017	2018	2019	2020	2021	2022	2023	2024
Guardian Angels	46%	56%	70%	86%	98%	103%	106%	112%	115%	114%	113%
St. Agnes of Assisi	63%	59%	56%	51%	53%	58%	64%	71%	79%	87%	92%
St. Andrew	95%	88%	77%	69%	60%	53%	48%	44%	39%	36%	34%
St. Emily	82%	79%	74%	71%	67%	63%	58%	57%	55%	53%	51%
St. Stephen	91%	95%	76%	72%	69%	71%	72%	75%	78%	79%	81%
St. Mary of the Angels	80%	85%	89%	92%	94%	95%	95%	93%	90%	87%	84%
St. Michael the Archangel	111%	118%	121%	122%	123%	122%	119%	115%	111%	108%	104%
St. Padre Pio	95%	91%	88%	81%	75%	70%	67%	61%	57%	53%	51%
St. Veronica	98%	97%	95%	91%	89%	84%	81%	77%	74%	70%	66%
Unnamed Kleinburg (2016)	0%	0%	49%	66%	80%	102%	124%	139%	151%	153%	155%
<b>REVIEW AREA TOTAL</b>	<b>78%</b>	<b>78%</b>	<b>80%</b>	<b>80%</b>	<b>80%</b>	<b>81%</b>	<b>82%</b>	<b>82%</b>	<b>83%</b>	<b>82%</b>	<b>81%</b>

Utilization below 60%      Utilization 130% or greater

Utilization Rate calculated using OTG Capacity with PAK

## North Woodbridge/Kleinburg-Nashville



## Total Elementary Enrolment v. Capacity in North Woodbridge/Kleinburg-Nashville

