



Learning Together in Christ
Engaging, Enabling, Empowering

Elementary P.A.C.E.

Program for Academic and
Creative Extension

Parent Information Night

PRESENTERS:

Diana Candido, Superintendent of Education, Exceptional Learners

Ellen Miceli-Bush, Coordinator Special Programs, Elementary

Elsa Strano, PACE Consultant

Dr. Diane Lood, Lead & Manager, Psychological Services

April 24, 2023

Student Services



Celebration of Gifts

We thank you for the wonderful students
we have in our schools.

May we help them to learn to recognize
the gifts they possess

and to never underestimate their potential.

May we give them the confidence and knowledge
they need to achieve their dreams.

Let them be supported as they risk, as they give,
and as they grow.

May our example, our dedication, and our compassion
comfort and inspire those we work with.

Amen





Land Acknowledgement



Todd Jamieson
YCDSB Knowledge Keeper

**We are gathered on the ancestral lands
and waters of all Indigenous Peoples,
who have left their footprints on
Mother Earth before us.**

**We respectfully acknowledge
those who have walked on it,
those who walk on it now,
and future generations
who have yet to walk upon it.**

**We pray to the Creator for strength and
wisdom that all may continue to serve
as stewards of the Earth.**



Agenda

Virtual Presentation

- Brief overview of the PACE program, Individual Education Plans, extensions, transportation and logistics (locations of PACE schools)
- PACE Program as described by PACE students

PACE School

- Break-out sessions at PACE schools
- Opportunity for questions



Criteria for entry into the PACE Program

Candidates who enter the PACE program are students who are identified as “Gifted” with demonstrated strengths in the following domains:

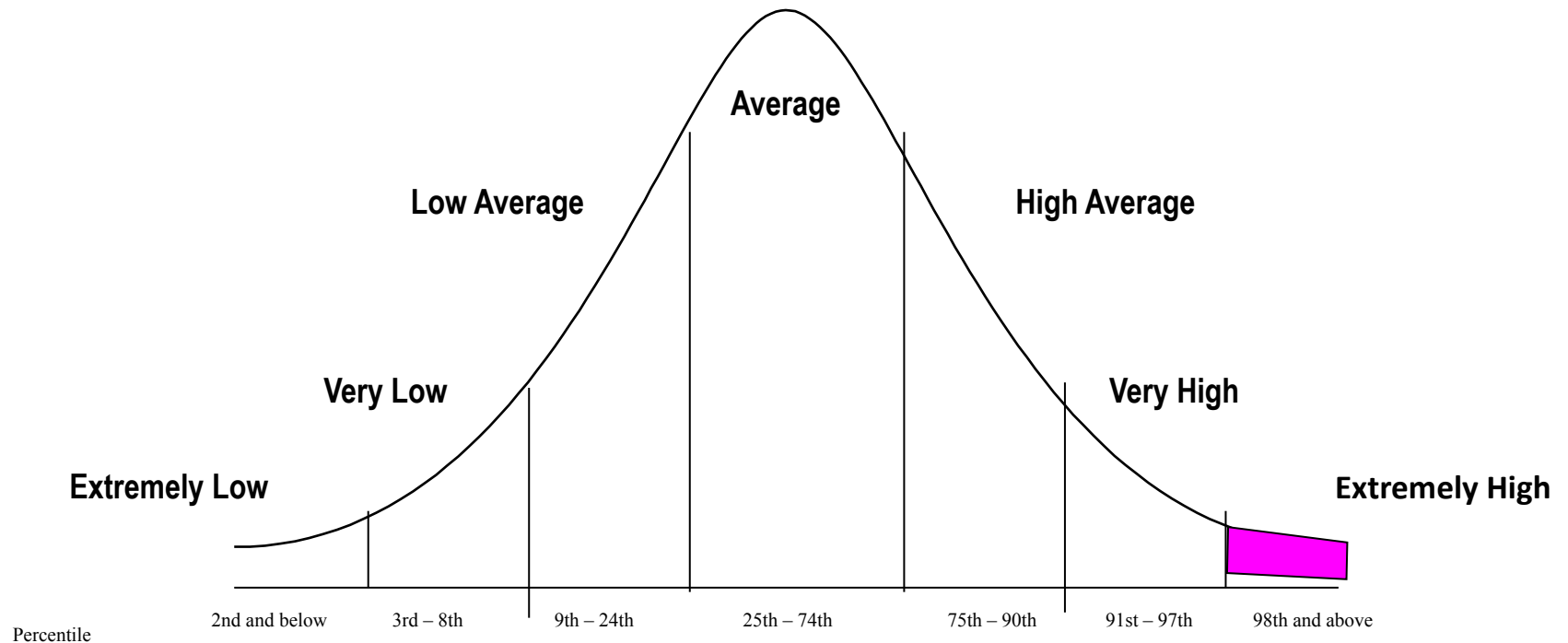
- Academic excellence
- Cognitive and intellectual skill development





The Gifted Student

About 2% of the population





Logistics of the PACE Program

The PACE Program:

- is a self-contained classroom
- supports students from grade 5 to 8
- students are full time members of a PACE class
- each student who has been formally identified, receives an IEP
- students transfer from current homeschool to the PACE school based on their current home address

Transportation:

- transportation is provided as per guidelines (must be 1.6 km or more)
- for transportation updates visit www.schoolbuscity.com in late August





Elementary PACE Schools

Transition to 5 PACE Centres

- ❖ St. Gregory the Great
- ❖ St. Charles Garnier
- ❖ St. Justin Martyr
- ❖ St. Paul is moving to Father Henri Nouwen (New Centre)
 - transition over the next 2 years
- ❖ St. Julia Billiard (New Centre)
 - phased in over the next 4 years



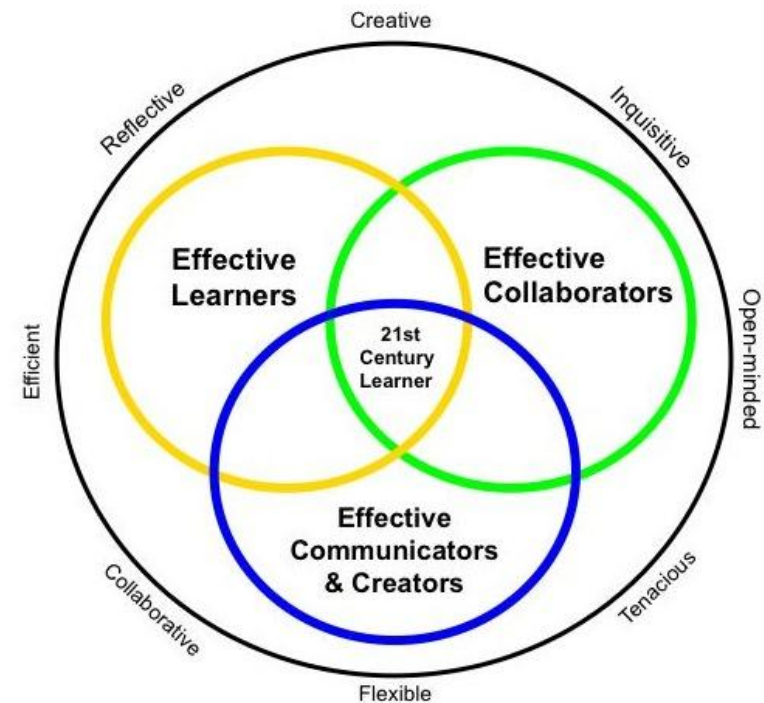
Overview of the Program for Academic and Creative Extension (PACE)

The PACE Program embeds:

- global competency skills throughout curriculum
- an interdisciplinary, integrated, and project-based approach to learning

The PACE Program promotes:

- critical higher level thinking skills
- creative problem solving
- decision making strategies
- collaboration
- effective oral and written communication
- research skills
- analysis and synthesis of information
- use of technology





The Role of the PACE Teacher

- is a teacher with Special Education qualifications
- guides students using curriculum, towards self-directed and independent learning
- utilizes a wide array of research based effective teaching strategies, varies the curricula
- applies various learning processes and models to programming and assessment
- provides opportunities for Blended Learning (use of technology and face to face teaching)





Technology in the PACE Program

- All students in the PACE program will have access to a Chromebook
- Each PACE classroom is equipped with an Interactive Whiteboard
- Robotics
- STREAM Centres

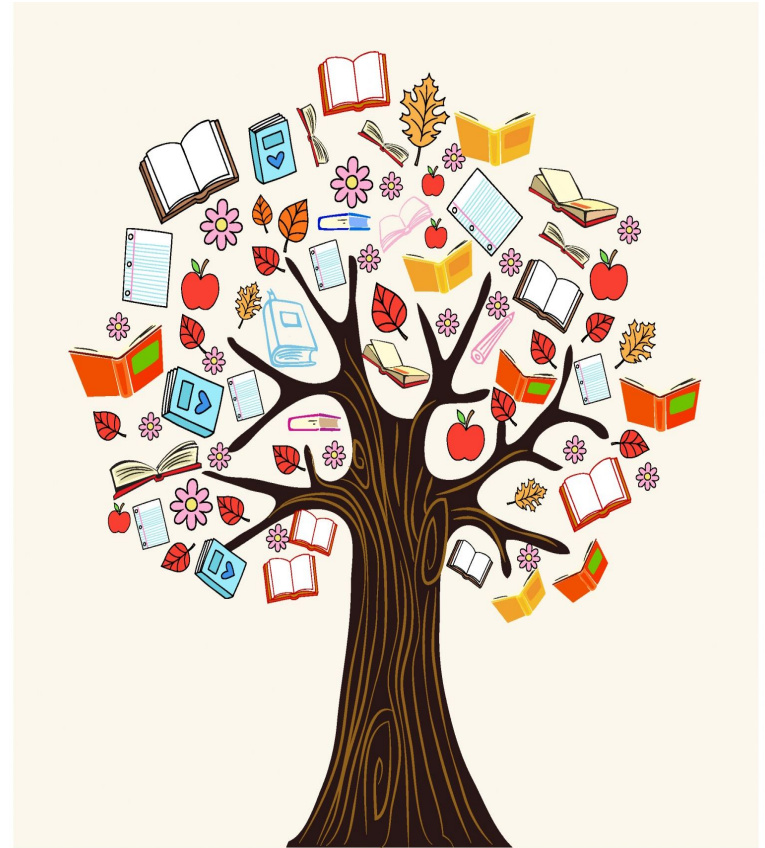




Differentiation within the PACE Program

Providing enrichment by:

- extending the depth and/or breadth in the areas of Language and Math
- compacting content to provide for rapid pacing throughout the curriculum
- substituting different or more abstract materials/resources with a greater focus on technology
- ensuring enriched learning experiences in all subject areas





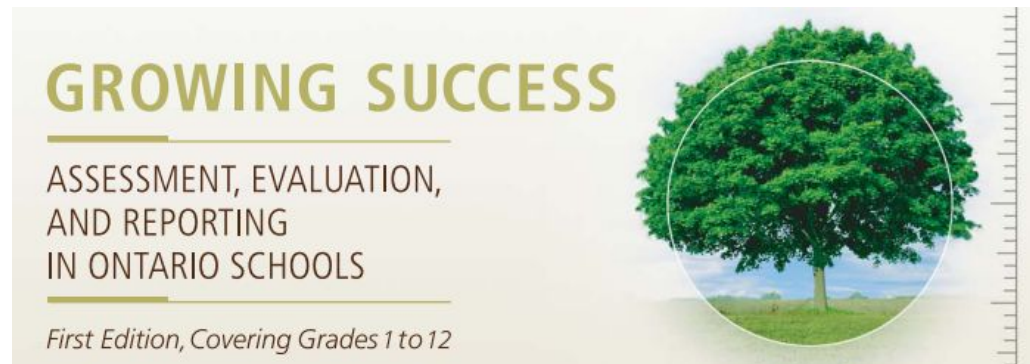
Sample Individual Education Plan of a PACE student (with extensions)

Ministry of Education Expectation (pg. #)	Math (Chapter/Lesson #)	Math Extension (Performance Task/ Culminating Task)
<ul style="list-style-type: none">Determine through investigation using software and strategies (i.e. building arrays), the relationships between the length and width of a rectangle and its area and perimeter (pg. 80)	<ul style="list-style-type: none">Explore the relationships between area and perimeterDevelop and use a rule for calculating areas of rectanglesUse coordinate systems on grids to determine locations (Chp. 8 – lesson 6)	<ul style="list-style-type: none">Create a cityscape using Geometer Sketchpad, and apply your knowledge of perimeter to forecast the area of land required



Assessment of students in the PACE Program

- letter grades/percentage marks are based on the student's level of achievement based on the Ministry of Education Grade Level Curriculum Expectations
- comments are based on student's level of achievement on the extensions in Language and Math
- assessment formats are varied, they may be in the form of multimedia presentations, collaborative projects, quizzes, tests, etc.





Once students are selected ...

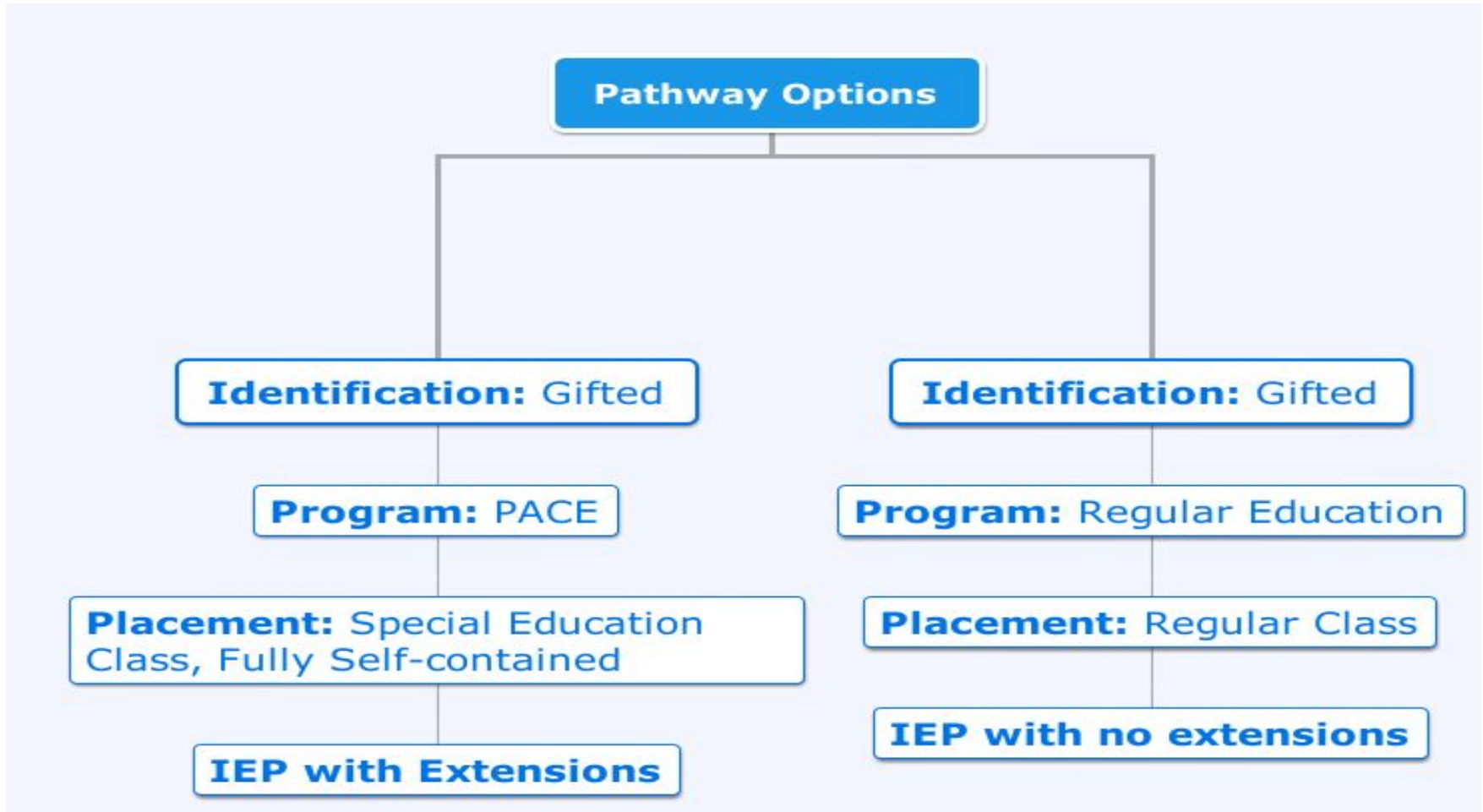
- Parent Letter of Acceptance (decision to be confirmed and returned to home school Principal by April 28, 2023)
- IPRC - Identification, Placement Review Committee
 - Identification - Giftedness
 - Program – PACE, placement fully self contained
OR Regular class at home school
- Key Entitlements for Students Identified
 - Individual Education Plan (IEP)
 - Annual IPRC Review





Next Steps

Letter of Invitation to Identification Placement and Review Committee (IPRC)





Parent Support: Transition to PACE

Decision to Enter PACE

- talk to your child about it
- all students are changing schools and beginning this new class
- encourage a “coping attitude”- not to judge too quickly what it will be like
- adopt a supportive, positive approach
- the PACE school may provide additional information on supporting the transition

Upon Entry into PACE

- Maintain and encourage a “balance”
 - academics, extra-curricular and rest/relaxation time
- Maintain appropriate home/school communication
 - agenda, report cards, scheduled interviews



Secondary PACE Program

PACE/Advanced Placement (AP) Programs beginning 2024-2025

- Father Bressani CHS
- Our Lady Queen of the World CA
- Our Lady of the Lake CA
- Sacred Heart CHS
- St. Brother Andre CHS
- St. Joan of Arc CHS
- St. Maximilian Kolbe CHS
- St. Theresa Lisieux CHS

PACE/AP Boundary information can be accessed by going to the School Locator at ycdsb.ca

Questions regarding the Secondary PACE Program can be directed to

Linda Lausic, Coordinator of Special Programs, Secondary



Students Attending PACE from a French Immersion Program

- Junior grade students in a French Immersion Program must earn a total of 485 school hours of French instruction per year
- Should you consider a decision to return to French Immersion, it must be made as soon as possible
- Recommendation is prior to Thanksgiving (beginning of October)

Questions regarding French Immersion can be directed to
Tanya Giovinazzo, French Immersion Consultant



Thank you!